

# ssLASER

## LASER BEAM POSITIONING AND MODULATION SYSTEM

Cutting, Kiss Cutting, Drilling, Engraving, 3d Modeling

### STANDARD HARDWARE FEATURES

- Pulse width Laser Modulation at up to 50khz rep rate. with Tickle.
- Flash saved motion parameters for a wide range of systems.
- Move Lasers on gantries at 50 ips or flying mirrors at 100 ips.
- 5a 44v Step Motor Drivers with Electronic Fusing for each axis.
- Universal Power input 90-265vac, Convection and Fan Cooling.
- Inputs on each axis for Limit and optional Encoder inputs.
- USB/RS-232 Control or Program Download 115.2kbaud.
- 32 Megabyte Memory for Data and 0.5 Meg Flash for Application.
- No jumpers, switches, or pots. Everything is programmable.
- Safety interlock plus indicators for motors, power, laser, comm.
- Advanced look ahead for smooth motion on a cutting path.

### OPTIONAL HARDWARE FEATURES

- FIBLAS Fiber Laser parallel interface for IPG Lasers.
- STEP&DIR Step & Direction control for Servo Drives.
- AUTOIFC Automation Interface.
- NETPAN or HANDPAN Control Panel.



Photo of s4544 with HANDPAN



### ssLASER CONTROL PANEL FEATURES

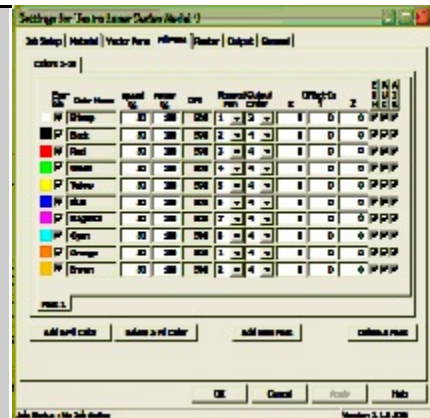
- 4x20 Character LCD Display with Back Light
- Encoder Pot adjuster for Jog, Power, Speed, etc.
- Dedicated function keys, indicators and Menu System
- Can store multiple programs and run stand alone.
- Interprets HPGL with graphic extensions for rasters.
- Jogging for all axes with arbitrary work zero setting.
- Speed and Power adjustments during operation.
- Stop for inspection at any time and restart.
- Custom OEM panel overlay with Logo.

### TestraPlot Windows 2000/XP/VISTA Printer Driver\*

- ◆ Allows for printing of raster and vector files from most applications.
- ◆ Colors may be used to select different Laser cutting parameters.
- ◆ Program by Material selection.
- ◆ Raster at various DPI levels to 1000.
- ◆ Rubber Stamp mode with automatic edge tapering.
- ◆ 256 level grayscale for 3-d engraving and photos.
- ◆ Rotary mode to wrap a graphic around a cylinder.
- ◆ Many other advanced features for automation and cutting control.

### Optional TestraMW-Laser CAD/CAM for advanced vector cutting.

\* NOTE: You are also supplied with ssXPV software which allows for motion setup and tuning. Other Software is available for different control applications such as a G-code interpreter, or a DLL for those whose inclination is to write their own application.



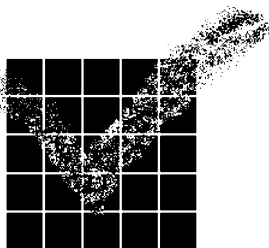
### OEM Custom Solutions

We will work with original equipment manufacturers to either integrate our standard controllers into their product or do custom solutions. When volume justifies it we will license our design and assist in your system development. We can also do turnkey designs and manufacturing of your product in its entirety including ASIC development to put in all on a chip. Custom software solutions are also available.

### SyncroStepping \*

All of our motion systems utilize a method that synchronously microsteps samples and corrects the current on multiple axes of control at a 50 kHz rate resulting in servo like smoothness of control to a stepper motor system.

\* US Patent 5,650,705



## Testra Corporation

1201 N Stadem Drive, Tempe AZ 85281

Ph:480-560-6141 Fx:480-907-2876

Email: sales@testra.com

[www.testra.com](http://www.testra.com)

April 2009